



Digital Platforms Pvt. Ltd.

A Subsidiary of CWD Limited

ADVANCED DIGITAL PORTABLE RADIO

CWD CD665

ENHANCE YOUR OPERATION



CD605

CD665

Empower Your Operation with CD665 Series

Compact, lightweight, and powerful – the CD665 Series delivers crystal-clear audio, extended coverage, long battery life, and exceptional durability. Designed for customer-facing teams, it ensures efficient communication, improved productivity, and uninterrupted service.

HIGHLIGHTS

Light & Stylish:

Slim and lightweight design for easy portability with clear audio for professional-grade communication.

Long Battery Life:

Over 20 hours of usage with advanced lithium polymer battery – no need to recharge during shifts.

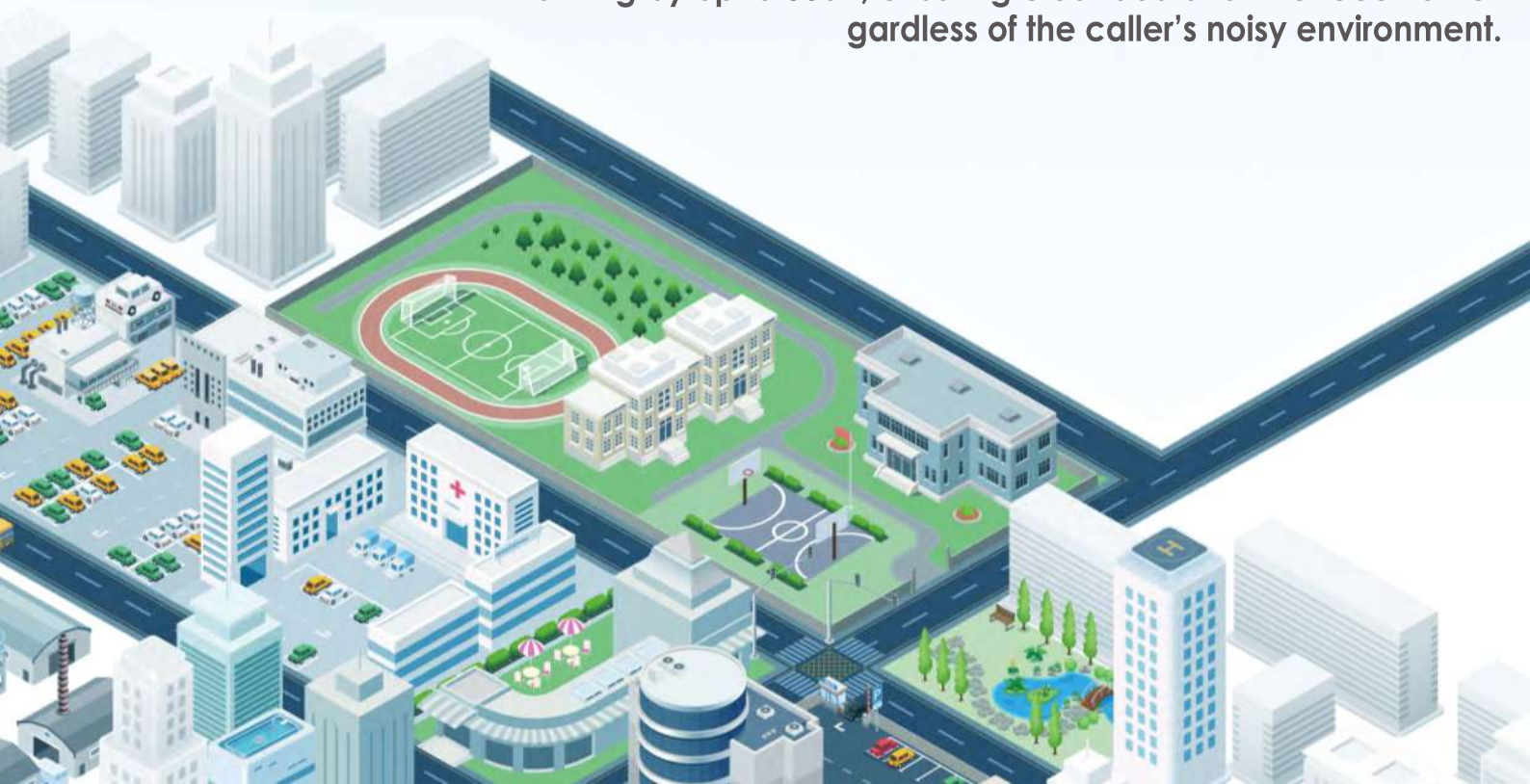
Rugged & Durable:

MIL-STD-810G certified and IP67 rated – resists drops up to 2 meters and tough environmental conditions.

Clear Audio:

Powerful speaker, AI noise cancellation, and water-porting technology ensure clear sound even in noisy or wet environments.

AI-based noise cancellation reduces background noise and howling by up to 30dB, ensuring clear audio for the receiver regardless of the caller's noisy environment.



Easy to Use:

The CD665 Series is compact, discreet, and user-friendly with tactile PTT, programmable buttons, and BT5.0 wireless connectivity - ideal for hands-free operation.

Extended Range:

Enhanced receiver sensitivity ensures reliable performance in weak signal areas, improving safety and communication for field teams.



FEATURES

Operating Modes

- Analog conventional
- Digital conventional
- XPT

Voice Service

- Private Call
- Group Call
- All Call
- Emergency Call
- Priority Interrupt

Data Service

- Text Message
- Quick Text Message

Connection

- BT Audio
- BT Data
- GNSS
 - GPS
 - GLONASS
 - BDS
- Open API

Safety

- Emergency
- Man Down
- Lone Worker
- Authentication
- Air Interface Encryption
- End-to-End Encryption
- Disable/Enable

Analog Mode

- 2-Tone signaling
- 5-Tone Signalling*
- HDC1200

Supplementary

- Profiles
- Programmable Buttons
- Interface Switcher
- Roaming
- Remote Monitor
- Radio Check
- Alert Call

SPECIFICATIONS

General	
Frequency Range	UHF: 400-527MHz VHF:136-174MHz
Channel Capacity	1024
Zone Capacity	64
Zone Channels	256
Channel Spacing	12.5kHz/20kHz/25kHz
Operating Voltage	7.7V (rated)
Battery	2000 mAh Li-polymer
Battery Life (5/5/90)	20h (GNSS OFF) 16h (GNSS ON)
Frequency Stability	±0.5ppm
Antenna Impedance	50Ω
Dimensions (H x W x D)	Rx605 : 122 x 55 x 30.5mm Rx665 : 122 x 55 x 31.5mm
Weight (with antenna & battery)	Rx605 : 265g Rx665 : 280g
Display	Rx605 : 0.91inch OLED Display Rx665 : 160 x128pixels, 65536colors, 1.8inch, 6rows
BT	BT 5.0 BLE+EDR
Receiver	
Sensitivity	Analog: 0.18μV (12dB SINAD); 0.16μV (Typical) (12dB SINAD) Digital: 0.18μV/BER5%
Selectivity	TIA-603: 60dB@12.5kHz / 70dB@20/25kHz ETSI: 60dB@12.5kHz / 70dB@20/25kHz
Intermodulation	TIA-603: 70dB@12.5/20/25kHz ETSI: 65dB@12.5/20/25kHz
Spurious Response Rejection	TIA-603: 70dB@12.5/20/25kHz ETSI: 70dB@12.5/20/25kHz
Blocking	TIA-603: 80dB ETSI: 84dB
Hum and Noise	40dB@12.5kHz; 43dB@20kHz; 45dB@25kHz
Rated Audio Power Output	0.5W
Rated Audio Distortion	≤3%
Audio Response	+1 ~ -3dB
Conducted Spurious Emission	<-57dBm

Transmitter	
RF Power Output	UHF: 1W/4W VHF: 1W/5W
FM Modulation	11K0F3E@12.5kHz 14K0F3E@20kHz 16K0F3E@25kHz
4FSK Digital Modulation	12.5kHz Data Only: 7K60FXD 12.5kHz Data and Voice: 7K60FXW
Conducted/Radiated Emission	-36dBm < 1GHz; -30dBm > 1GHz
Modulation Limiting	±2.5kHz@12.5kHz; ±4.0kHz@20kHz; ±5.0kHz@25kHz
FM Hum & Noise	40dB@12.5kHz; 43dB@20kHz; 45dB@25kHz
Adjacent Channel Power	60dB@12.5kHz; 70dB@20/25kHz
Audio Response	+1 ~ -3dB
Audio Distortion	≤3%
Digital Vocoder Type	AMBE+2™
Digital Protocol	ETSI-TS102 361-1,-2,-3
Environmental	
Operating Temperature	-30°C~ +60°C
Storage Temperature	-40°C~ +85°C
ESD	IEC 61000-4-2 (Level 4) ±8kV (contact); ±15kV (air)
Dustproof & Waterproof	IEC60529-IP67
Humidity	Per MIL-STD-810G Standard
Shock and Vibration	Per MIL-STD-810G Standard

Location Services	
GNSS	GPS, GPS+GLONASS, GPS+BD5
TTF (Time To First Fix) Cold Start	<1minute
TTF (Time To First Fix) Hot Start	<10seconds
Horizontal Accuracy	<5meters
Accuracy specs are for long-term tracking (95th percentile values>5 satellites visible at a nominal -130dBm signal strength)	

*Radio only - Battery -20°C

ACCESSORIES

Standard



Charger



Adapter(12V/1A)



Li-polymer battery
2000mAh



Antenna



Belt clip



Strap

Optional



BT Wireless earpiece



Programming cable
(USB port)



BT wireless ring PTT



BT Wireless remote
speaker microphone



Wired earpiece



Multi-unit charger

CWD LTD.

Office no. 14TH FLOOR, UNIT 1406 - 1409, RUPA SOLITAIRE, MILLENIUM BUSINESS PARK, MAHAPENAVI MUMBAI - 400710

✉ info@cwдин.com

🌐 <https://www.cwдин.com/>