



RxIS203

Description



- | | |
|------------------------------------|--------------------------|
| 1.SIM/SD card slot | 8.Main rear camera |
| 2.PTT (Push to talk over cellular) | 9.Wide angle rear camera |
| 3.Front camera | 10.Temperature sensor |
| 4.Type-C port | 11.Fingerprint scanner |
| 5.Volume button | 12.NFC area |
| 6.Power button | 13.Magnetic charging pin |
| 7.Flash LED | 14.Loudspeaker |

Note:

- Double press the power button to open the camera
- Long press power and volume - button at the same time to take a screenshot.

Dual SIM Dual Standby

The phone supports dual SIM in Standby mode. When none of SIM are in use, both the SIMs are active and on Standby mode. When one of the SIM is in use the other SIM becomes inactive.

- Dual SIM cards can't use voice services and data services at the same time.
- In dual standby if a person is using SIM 1 and another person is calling on SIM 2, they will hear the message "Not reachable, try again later".
- When one of the SIM cards uses data services, the data services of the other SIM card can't be accessed.

Packing Include

RxIS203 Phone	1
Power Adapter	1
Type-C Cable	1
Quick Guide	1
Lanyard	1

Safety instructions

READ THIS INFORMATION BEFORE USING YOUR MOBILE DEVICE.

1.General Safety

- Please use the screen protector that does not block the light sensor to avoid affecting its normal use.
- Please use the official original accessories to avoid damage to the phone.
- Do not keep the magnetic stripe card with the mobile phone for long time to avoid the magnetic strip damages.
- Do not expose your phone to strong sunlight to avoid damage due to overheat.
- Do not connect with other Unauthorized equipment.
- Do not disassemble the phone.
- It is forbidden to put the mobile phone under high temperature or throw it into fire to avoid explosion.
- Switch off the phone before installing SIM card and/or memory card to avoid any damages.

2.Traffic Safety

- Please do not use the phones and follow the relevant traffic laws when driving.
- Do not place the mobile phone above the car's airbag or inside the area covered by the airbag released.
- Please comply with the relevant regulations of the airline. Do not use your phone in the area or during the time when it is forbidden. Please turn off your phone if necessary.

3.Medical safety

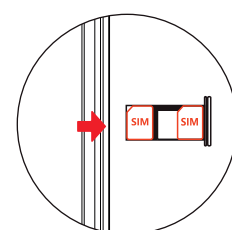
- The radio waves of mobile phones may affect some medical devices, such as pacemakers, cochlear implants, hearing aids, etc. The mobile phone and these medical devices should be kept at least 20 cm away. Feel free to consult the restrictions on the use of mobile phones with manufacturer when exception occurs.

USAGE TIP 1

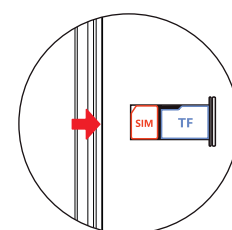
Install SIM card / TF card

(Dual SIM Card/One SIM One TF Card)

- Pull the sim card tray out after switching off the phone. Install the SIM and TF only when the phone is switched off to avoid damages.
- Place the SIM card / TF card securely in the card tray.



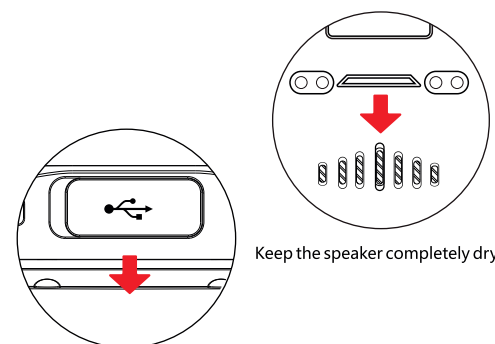
Dual SIM Card



One SIM One TF Card

USAGE TIP 2

Before exposing the phone to water.



Keep the speaker completely dry

USB port should be firmly closed

WARNING

- Before exposing the phone to water, make sure all the ports are covered as shown above.
- The phone's water resistance performance will be impacted in case of physical damage.
- Make sure to keep the speaker and receiver completely dry before using the phone. It may impact the experience otherwise.

THE BASICS OF TROUBLESHOOTING

Problem	Solution
Abnormal microphone/ Speaker/Receiver behavior post drop in water	Shake the phone dry to make sure the water is out of membrane.Use the hair dryer to quickly dry the excess water to restore the volume to normal.
App Crashes/Freezes/Unable to recharge/Restart frequently	Quick restart often solves minor issues with phone.On the right side of the phone you will find a power button.Restart the phone using that button.
Magnetic charger/Dock charger not working	Check the charger and the contact position for any signs of dirt or oxidation.A quick wipe with cotton swab and alcohol should solve the issue.
Abnormal power consumption	First, you should try to dim the screen brightness and turn off the GPS, WiFi and Bluetooth if you are not using them. Additionally, you should check your Battery Usage in your phone Settings and see which apps are using more battery. You can close or disable the ones that are draining more battery if you usually do not need them.
Unable to register the SIM card	If after proper installation of SIM card the phone doesn't recognize the network try switching the flight mode on-and-off or try restarting the phone.If the issue still persists clean the chip with alcohol and cotton swab.
MicroSD card does not work	Your microSD probably has errors and your phone is not recognizing that card. Try to connect a card reader to your PC and format the microSD card at least two times. Restart your mobile phone and insert the SD card again.
Mobile network not registering internet access	Go to settings-Network&Internet-Mobile network-Mobile data-switch it on.Or slide the screen to shortcut menu-click the signal icon on upper right corner of the mobile data network- switch it on.
Restore to factory setting	Please note factory reset will erase all the data from the phone,so make sure you take the backup of data before you do a factory reset. Open settings-System-Advanced-Reset options-Erase all data (factory reset).



info@realix.co.uk
www.realix.co.uk